



# HEN1/2 Polyclonal Antibody

<b>Catalog No</b>	YP-Ab-01772
<b>Isotype</b>	IgG
<b>Reactivity</b>	Human;Mouse
<b>Applications</b>	WB;IHC;IF;ELISA
<b>Gene Name</b>	HEN1/HEN2
<b>Protein Name</b>	Helix-loop-helix protein 1
<b>Immunogen</b>	The antiserum was produced against synthesized peptide derived from human HEN1/2. AA range:41-90
<b>Specificity</b>	HEN1/2 Polyclonal Antibody detects endogenous levels of HEN1/2 protein.
<b>Formulation</b>	Liquid in PBS containing 50% glycerol, 0.5% BSA and 0.02% sodium azide.
<b>Source</b>	Polyclonal, Rabbit,IgG
<b>Purification</b>	The antibody was affinity-purified from rabbit antiserum by affinity-chromatography using epitope-specific immunogen.
<b>Dilution</b>	WB: 1/500 - 1/2000. IHC: 1/100 - 1/300. ELISA: 1/10000.. IF 1:50-200
<b>Concentration</b>	1 mg/ml
<b>Purity</b>	≥90%
<b>Storage Stability</b>	-20°C/1 year
<b>Synonyms</b>	NHLH1; BHLHA35; HEN1; Helix-loop-helix protein 1; HEN-1; Class A basic helix-loop-helix protein 35; bHLHa35; Nescient helix loop helix 1; NSCL-1; NHLH2; BHLHA34; HEN2; KIAA0490; Helix-loop-helix protein 2; HEN-2; Class A basic helix-loop-he
<b>Observed Band</b>	19kD
<b>Cell Pathway</b>	Nucleus .
<b>Tissue Specificity</b>	Brain,Eye,
<b>Function</b>	function:May serve as DNA-binding protein and may be involved in the control of cell-type determination, possibly within the developing nervous system.,similarity:Contains 1 basic helix-loop-helix (bHLH) domain.,subunit:Efficient DNA binding requires dimerization with another bHLH protein.,
<b>Background</b>	The helix-loop-helix (HLH) proteins are a family of putative transcription factors, some of which have been shown to play an important role in growth and development of a wide variety of tissues and species. Four members of this family have been clearly implicated in tumorigenesis via their involvement in chromosomal translocations in lymphoid tumors: MYC (MIM 190080), LYL1 (MIM 151440), E2A (MIM 147141), and SCL (MIM 187040).[supplied by OMIM, Nov



2002],

**matters needing attention**

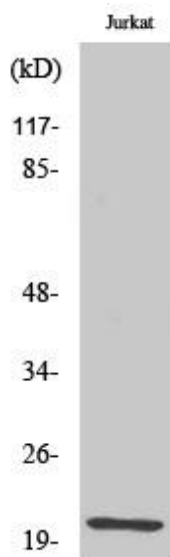
Avoid repeated freezing and thawing!

**Usage suggestions**

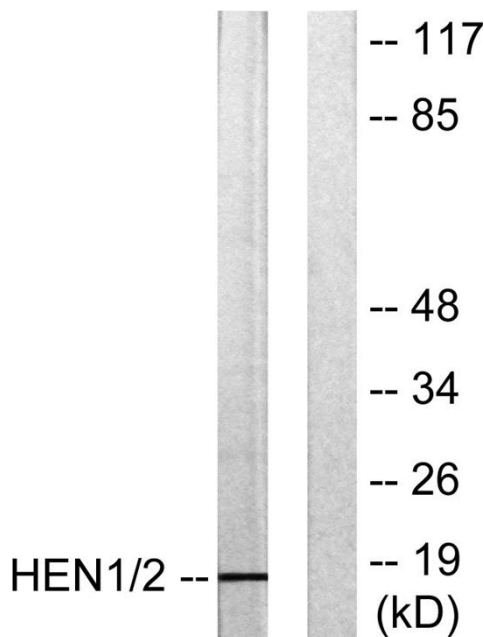
This product can be used in immunological reaction related experiments. For more information, please consult technical personnel.



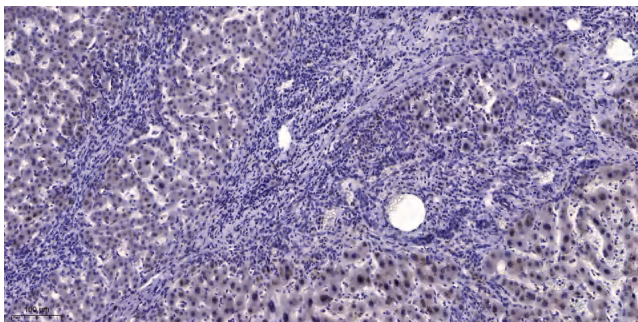
## Products Images



Western Blot analysis of various cells using HEN1/2 Polyclonal Antibody diluted at 1:1000 cells nucleus extracted by Minute TM Cytoplasmic and Nuclear Fractionation kit (SC-003, Inventbiotech, MN, USA).



Western blot analysis of lysates from Jurkat cells, using HEN1/2 Antibody. The lane on the right is blocked with the synthesized peptide.



Immunohistochemical analysis of paraffin-embedded human liver cancer. 1, Antibody was diluted at 1:200(4° overnight). 2, Tris-EDTA, pH9.0 was used for antigen retrieval. 3, Secondary antibody was diluted at 1:200(room temperature, 45min).